



New Zealand Council Of  
Christian Social Services

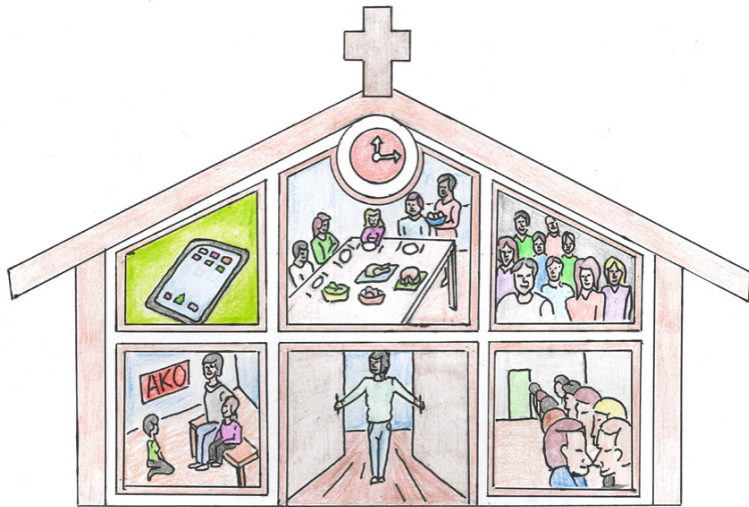
**Outcomes Plus  
&  
Data for Good**

# Outcomes Plus

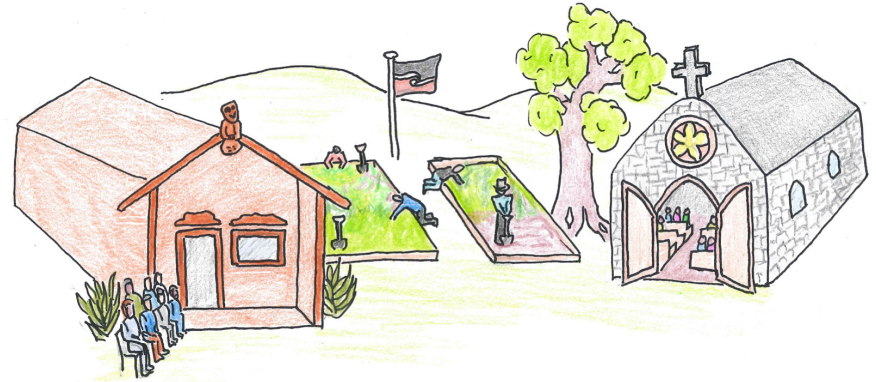
## The Added Value from Community Social Services

- Selling social “outcomes” to the lowest bidder – commodifying human need
- A rise in national and international for-profits delivering services – the impacts on community resources
- A real focus on how the “added value” of community based organisations contributes positively to communities, whānau, families and individuals

# What did we find?

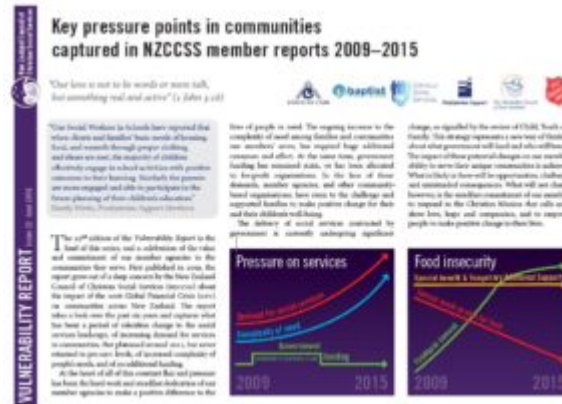


Organisational Specific Capital



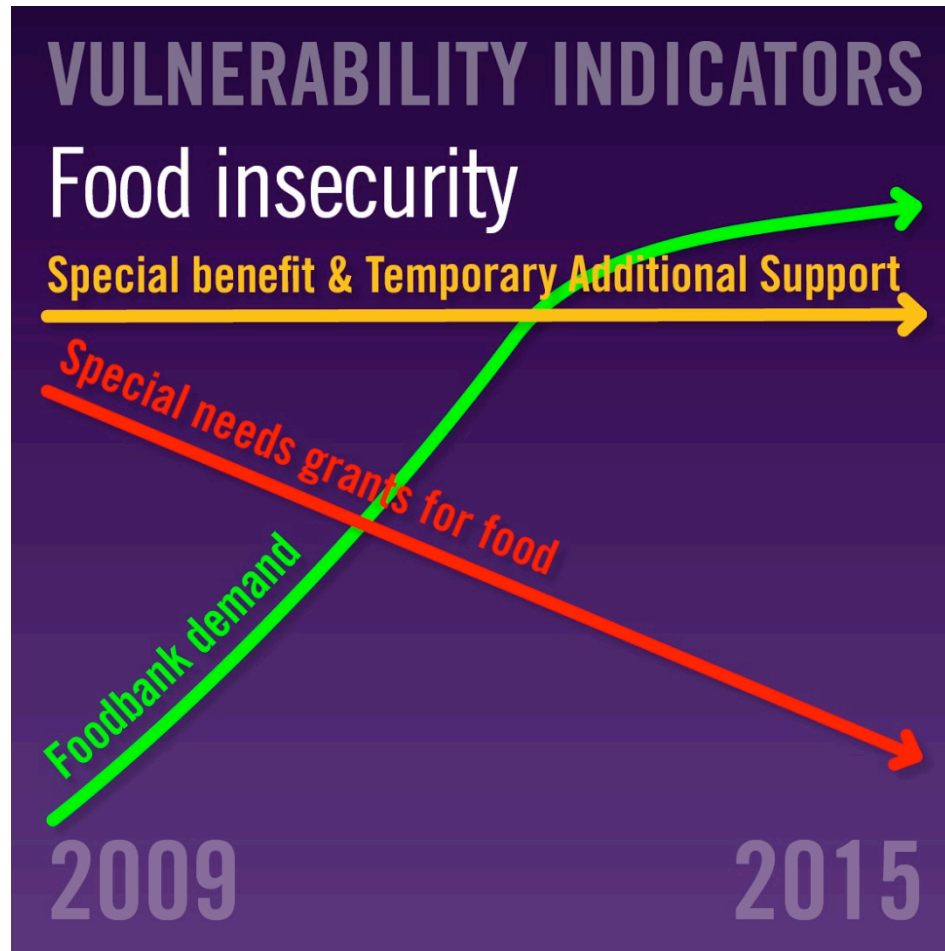
Community Value

# Vulnerability Report

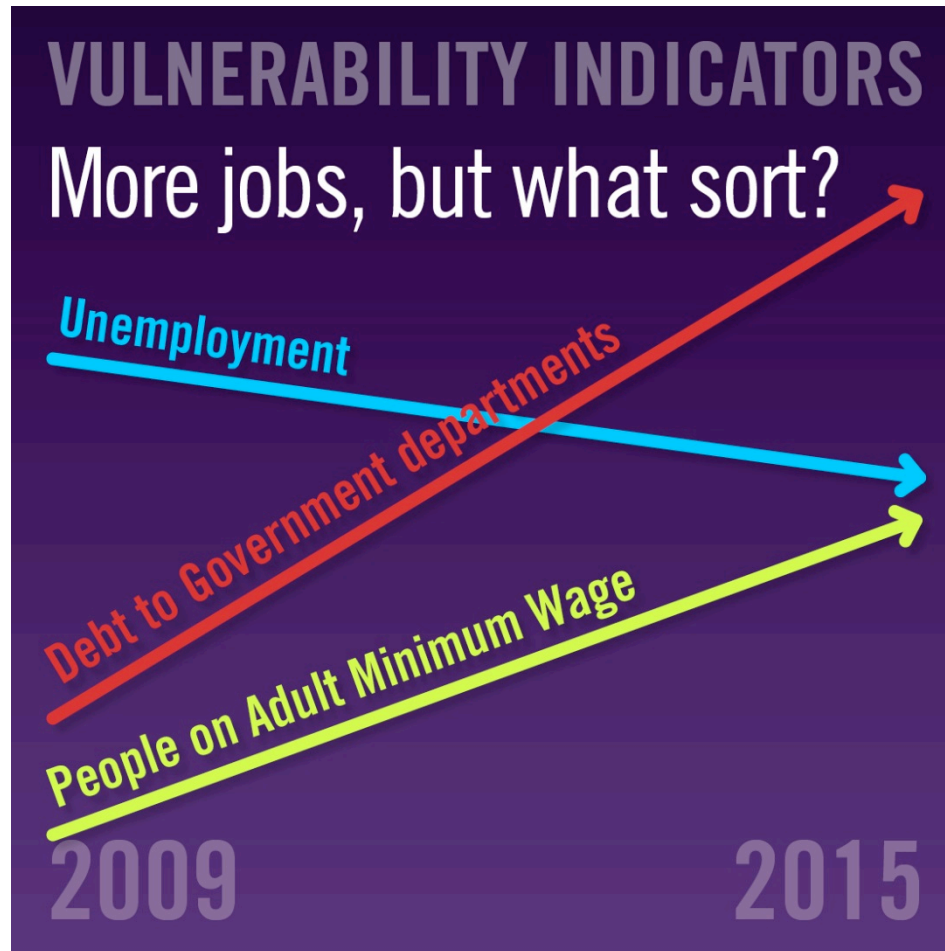


2009 -2016 series of reports comparing members' stories, data and feedback to Government data

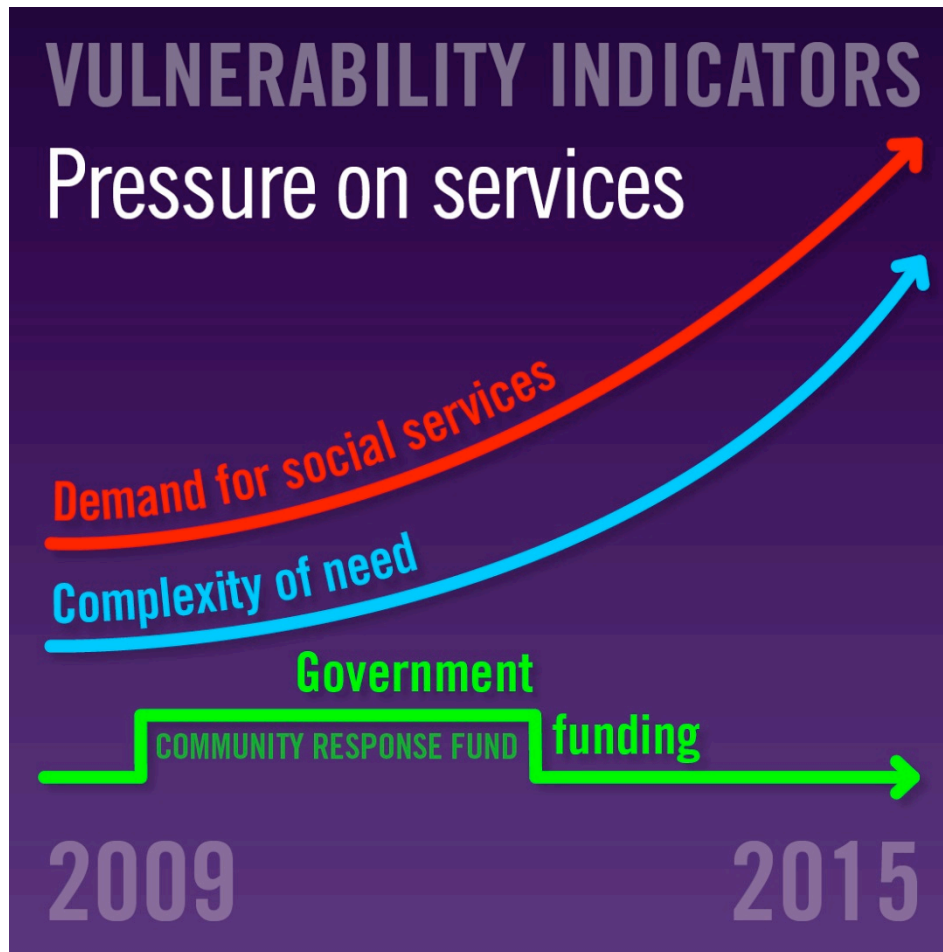
# Food



# Jobs



# Services



# Social Work and Social Justice

- ... we need to recognise that there is an issue for social work to address.
- ... to identify and acknowledge the significance of poverty in the lives of the families and communities we work with.
- ... to expect that our individual and collective actions (and those of our representatives) will reflect this acknowledgement.
- ... an active and persistent public social work voice on issues of poverty, a voice which is articulated alongside and for clients, individually and collectively.
- ... standing up publicly for and alongside poor and impoverished families and communities, sometimes in ways that will not be comfortable but which can be managed if done collectively.



# Data for Good

HOW CAN WE USE OUR DATA TO CHANGE POLICY?

- Understanding the impacts of economic and social policy on whānau and community
- E.g. Benefit sanctions and the impact on tamariki  
July 2013 to September 2014 – 80,202 beneficiaries sanctioned: 27,778 of these people had one or more children.

**What happened to these children?**

# The Lived Experience

- Using data and narrative to tell the real story
- Using the real story – the lived experience to inform policy
- The data needs to be
  - Whānau focussed – who
  - Place based – rural, provincial, urban
  - Income – benefit/work/combination
  - Presenting issues – why did they come to you?
  - Underpinning causes – poverty, poor housing, bad debt, sanctions, evictions

# Want to know more?

Website for Vulnerability Report and Outcomes  
Plus research

[www.nzccss.org.nz](http://www.nzccss.org.nz)

The Data Project contact me at

[trevor@nzccss.org.nz](mailto:trevor@nzccss.org.nz)