

MĀORI, STATS & DATA SOVEREIGNTY: IMPACTS OF 2018 CENSUS

Kirikowhai Mikaere

Community Research Webinar, 14 October 2019

TE WEHI



- Role of data in Iwi Development
- Impact of 2018 Census
- Where to from here?

TE WEHI

ROLE OF DATA IN IWI DEVELOPMENT

Data plays a vital role in how we exercise our Tino Rangatiratanga with and for:

- Our people
- Our place
- Our future

ROLE OF DATA IN IWI DEVELOPMENT

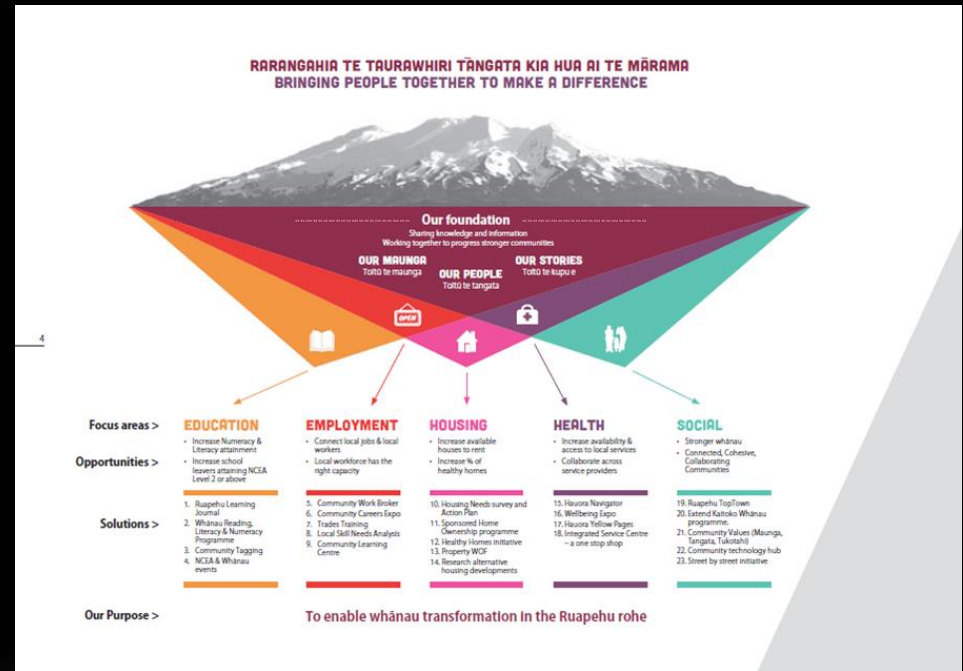
PEOPLE

- Who & where are our people?
- How are they connecting with their identity?

IDENTITY is fundamental

- Iwi are not just Māori, we need relevant data so our decision makers can act.

PLACE

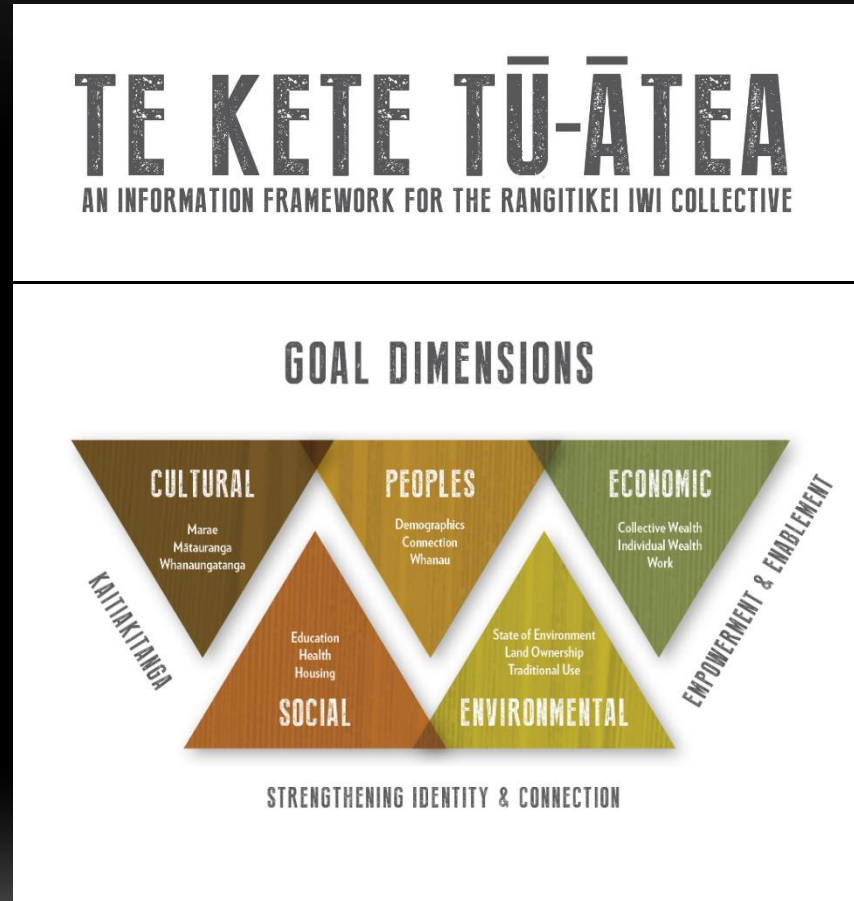


TE WEHI

ROLE OF DATA IN IWI DEVELOPMENT

FUTURE

- Design our own development
- Measure towards our aspirations
- IWI information + IWI analysis = Better IWI Futures



TE WEHI

IMPACT OF 2018 CENSUS

STATS NZ

- **29 April 2019: Iwi data will not be released as official statistics**
- **Other iwi collections across government data system/OSS were not of suitable quality to fill gaps**
- **Value of the Census to Māori = over half a billion \$\$**
 - **Ratio 1:6 for NZ**
 - **Ratio 1:8 for Māori**

IMPACT OF 2018 CENSUS

IWI

- Nearly three decades Census has been the primary source of data for iwi from government
- Huge lack of relevant data for IWI decision makers
- Not just interested in data for the decisions we make but also data that is used in decisions made about us

WHERE TO FROM HERE

- Co-develop/Co-design – help redesign a more dynamic data ecosystem for Aotearoa
- Invest in our communities to collect our own data, with others, for us
- Future-proof our data capability & capacity

Data providers – Data consumers – Data designers

“DATA – TIRATANGA” (Rangatahi ILG)

TE WEHI